

Certification
 I, Daryl Graus, Planning and Zoning Manager for Sylvania Township, do hereby certify that this map is current as of February 16, 2022 and illustrates all approved changes to the official zoning map.

Daryl Graus

MICHIGAN
OHIO

CITY OF SYLVANIA

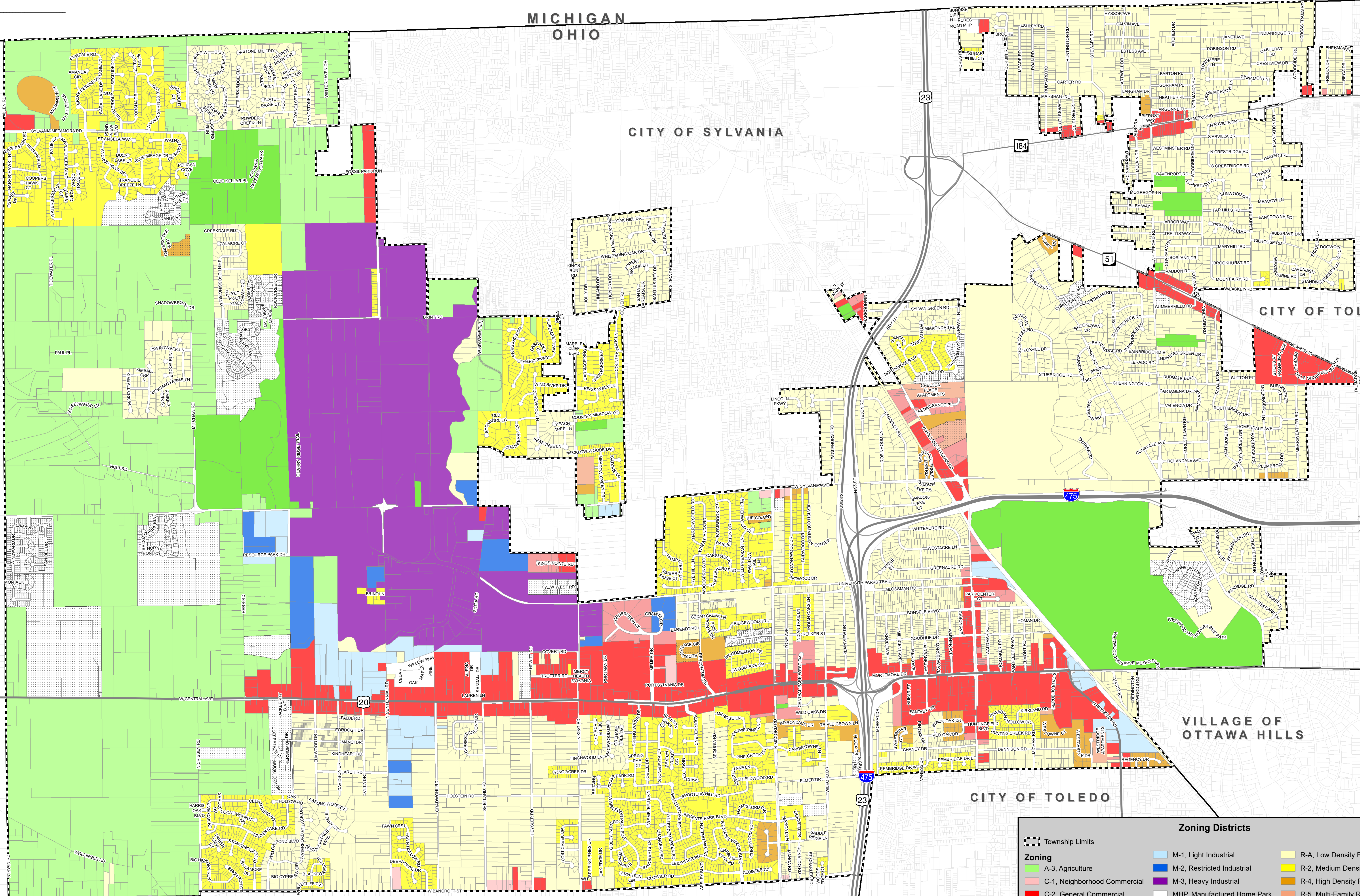
CITY OF TOLEDO

RICHFIELD TOWNSHIP

SPENCER TOWNSHIP

SPRINGFIELD TOWNSHIP

VILLAGE OF OTTAWA HILLS



Zoning Districts

Township Limits	M-1, Light Industrial	R-A, Low Density Residential
A-3, Agriculture	M-2, Restricted Industrial	R-2, Medium Density Residential
C-1, Neighborhood Commercial	M-3, Heavy Industrial	R-4, High Density Residential
C-2, General Commercial	MHP, Manufactured Home Park	R-5, Multi-Family Residential
C-4, Professional/business Office	PUD, Planned Unit Development	S-1, Special

OFFICIAL ZONING MAP
SYLVANIA TOWNSHIP, LUCAS COUNTY, OHIO

Notes
 Zoning Map is Current as of February 2022.

Scale: 0 500 1,000 Feet



Date Saved: 2/23/2022 3:04:50 PM